

# KIP

WORLD IS WIDE | WIDE FORMAT PRINTING SOLUTIONS



Exceptional value –  
superior productivity

**KIP 7700 | KIP 7900**



# The ultimate in quality, versatility & reliability

The KIP 7700 and KIP 7900 multifunctional wide format printing systems provide the ultimate in versatility, advanced technology, superior image quality and reliable performance.

Targeting large print providers & CRDs in engineering, manufacturing, building and construction environments with scan, copy and online folding requirements, these systems have been designed to deliver exceptional value, sustainable benefits and cost effective operation. KIP 7700 and KIP 7900 combine this with superior productivity and integrated system control for all network printing, scanning and copying operations. Both are available in a wide range of modular, integrated expandable system configurations to meet specific production demands:



KIP 7700/7900 network printing systems

### ■ Efficient network printing

As monochrome network printer and printer via USB, KIP 7700/7900 offer printing speeds of 5 A0 and 7 A0 prints per minute respectively, targeting monthly print volumes of up to 12,000 (KIP 7700) and up to 15,000 (KIP 7900) prints. Both offer a generous media capacity consisting of 4 quick-change media decks each featuring a 150m-roll capacity plus an integrated bypass sheet feeder.



KIP 7700/7900 multifunctional systems

### ■ Space-saving multifunctionality

The multifunctional print, copy and scan systems KIP 7700/7900 accurately reproduce technical documents at astonishing speed in true 600 dpi optical resolution. Configured with the KIP 600A or KIP 2300 scanner, KIP 7700 and 7900 deliver maximum digital imaging quality and performance on a reduced total system footprint. For perfect quality output, these systems automatically sense the original document width and dynamically adjust exposure settings during the scanning process.

### ■ Flexible mono and colour production

In combination with the mobile KIP 2300 scanner, the KIP 7700/7900 production systems provide modular, high demand mono & colour solutions for the most discerning reproduction centres. A range of professional grade KIP software delivers colour management features and powerful image editing tools that perform difficult tasks easily and with consistent results from one job to the next.

Thanks to a highly advanced design, the KIP 7700/7900 production systems reproduce complex graphics and photos as accurately and effortlessly as simple line drawings.

**The KIP 7700/7900 system series sets a consistently high standard for speed, quality and flexibility in a digital image capture system. Its durable design combined with top quality construction materials ensures long-term reliability with consistent input and output quality in the most demanding mono and colour imaging production environments.**



# KIP's professional system advantages

## ■ Outstanding value

Providing high value and real customer benefits, KIP 7700 and 7900 take advantage of software workflow efficiencies that help reduce paper usage by previewing prints and scans, automatic media and original size recognition and image positioning features to avoid media waste. Both systems utilise patented KIP HDP technology that greatly reduces overall toner consumption, completely eliminates waste toner and minimises replacement parts. Reduced energy consumption is another essential feature, so that naturally KIP 7700/7900 are Energy Star and RoHS compliant.

- Lowest-in-class cost of operation
- 100% toner efficiency
- Space-saving design
- Illustrated operator guides on touch screen
- Efficient software workflow
- Integrated accounting system

## ■ Exceptional versatility

The KIP 7700 and KIP 7900 are available in a variety of system configurations: The network print system should ideally be combined with an integrated print tray or a high capacity auto stacking system. The print, copy and scan system could have the KIP 600A or KIP 2300 scanner positioned on top of the printer for a single, space saving footprint and can be configured to return originals to the operator or stack them on a rear rack for increased productivity.

- Expandable system configurations
- Strict security standards are met
- Convenient paper loading system
- USB printing and scanning support
- Enhanced capabilities with KIP Color Advanced/Pro software
- On-screen copy, print & scan previews



KIP 7700/7900 multifunctional production systems

## ■ Superior productivity

KIP 7700 and 7900 deliver consistent print quality from the first page of a print job to the last and from one job to another. Their excellent performance across the board is sure to satisfy the most stringent demands on quality and top productivity.

A state-of-the-art print unit maintains system productivity while ensuring maximum uptime to make every minute productive. Advanced self-diagnostic systems eliminate potential print delays by providing designated operators with system status alerts via email if paper or toner replenishment is needed.

- Direct copying to inkjet printers or creation of digital colour files
- Concurrent digital print and scan
- Powerful multi-thread processing
- Advanced greyscale management
- Fine line image enhancement

## ■ Advanced technology

The KIP 7700/7900 systems comprise an advanced range of monochrome and colour printing, copying and scanning solutions optimised for economical output. The finely tuned interaction of all KIP software components maximises the efficiency of production workflows, offers greater ease of use and accelerates the entire job production cycle. These solutions offer industry leading print speeds with high-capacity paper handling and high yield toner cartridges, as well as a wide range of features for greater productivity, media versatility, networkability and flexible system configurations.

- KIP software applications included
- Range of integrated scan & copy technologies
- Unified accounting system links all KIP print management applications
- Individually calibrated LED elements deliver pixel perfect images
- Automatic media and toner monitoring
- Dependable cost controls

# KIP 7700 & KIP 7900 network print systems



### ■ KIP 600 x 1,800 dpi imaging technology

Standard in the KIP 7700/7900 series printing systems, the KIP 600 x 1800 dpi imaging technology provides maximum print quality to satisfy the demands of modern CAD design. It creates greater definition in print quality, particularly with greyscales, embedded photos, arcs, and curved line reproduction.

### ■ Monochrome printing

With the help of the patented KIP High Definition Print technology, KIP 7700 & 7900 achieve a new level of precision print production. HDP is an innovative approach to wide format printing that has quite literally redefined the standard for production print quality.

A specialised print head design featuring individually calibrated LED pixels provides smooth and consistent fine lines, halftones and graphic image quality. An oil-free fusing process and 100% efficient KIP toner technology operate cleanly without carriers, developers or waste. In addition, each system's integrated 4 media capacity rolls ensure exceptionally accurate sheet sizes for a highly professional look with an easy-load end cap system and electronic pulse signal cutters.

These wide format network printers efficiently produce documents sent via application drivers, networked PCs or web-based applications and submission tools. KIP 7700 & 7900 handle demanding print runs and compressed delivery times with the highest quality expectations in virtually any digital imaging environment and can be easily upgraded to incorporate monochrome and colour copying and scanning.

### KIP features

- Integrated touch screen with advanced user management
- 5 or 7 A0 size prints per minute, 4 integrated media rolls
- 600 x 1,800 dpi imaging technology
- 100% toner efficiency
- Energy Star certified
- Automatic compensation for ambient temperature and humidity
- PC- and web-based submission tools included with each system
- Certified application drivers incorporate accounting functionality





# KIP 7700 & KIP 7900 mono/colour multifunctional systems



## ■ Monochrome copying & scanning

Equipped with the KIP 600A scanner, the KIP 7700/7900 handle the full spectrum of monochrome and colour scanning applications making them ideal for technical imaging as well as full colour graphics. In addition, KIP 7700 & 7900 provide the capability to scan to network PCs, web-based plan room applications and removable media drives. A range of convenient preset quality controls is available to assist operators with making proper compensations; and the system dynamically adjusts exposure settings while scanning. With the KIP 2300 CCD production scanner, KIP 7700/7900 turn into professional grade monochrome print and mono/colour copy & scan solutions that provide high demand users with the ultimate in imaging technology. Both scanners are easily integrated into the system without increasing its footprint – it sits conveniently on top of the printer. The software does not require a dedicated PC but runs on the internal IPS controller.

## ■ Enhanced Monochrome Image Quality

KIP 2300 imaging technologies create crisp black and white prints, copies and scans of technical drawings, photographs, maps and renderings. An advanced greyscale mode is ideal for accurate photo reproductions.

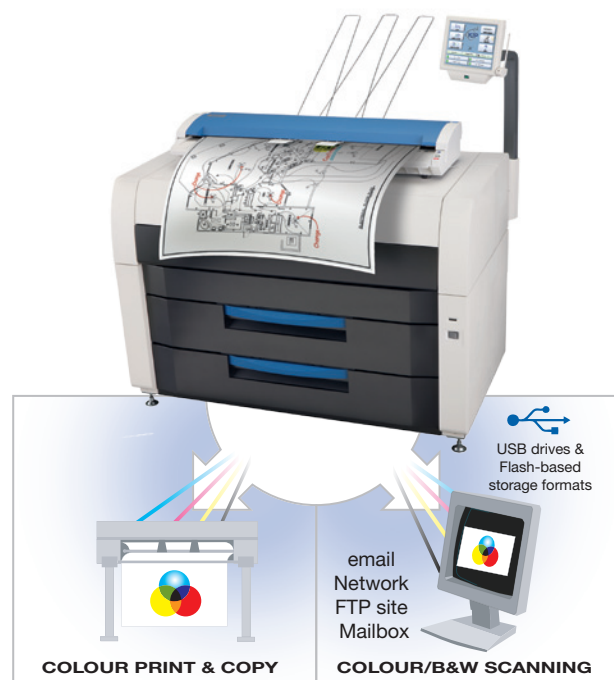
## ■ KIP Cloud scanning

Scanning via email is a fresh approach to revising documents and drastically improves modern collaboration efforts. Hardcopy documents may now be copied to KIP systems anywhere in the world and instantly output on inkjets or KIP colour systems.

- Uses any phone, tablet, laptop or PC
- No need to install drivers or software applications
- No learning curve, no training
- Submit print ready files via email attachments
- Optional keywords provide expanded flexibility

## ■ KIP Color Advanced software

Colour scanning, copying and printing is accomplished directly from the KIP touch screen display with preset selections for image quality, file naming, copy or print count, image sizing, and rotation. KIP delivers world-class colour scanning, copying and printing directly to industry standard inkjet printers that have been fully integrated with KIP software.



# KIP 7700 & KIP 7900 modular production systems

### ■ Production imaging

The KIP 7700 & 7900 production systems set a uniquely high standard for speed, quality and flexibility in a digital image capture system. Equipped with a stand-alone KIP 2300 scanner, best-in-class productivity is achieved from advanced CCD image capture and new KIP Tru-Speed Technology for high-speed throughput without delays. World-class flexibility is delivered via the ability to scan face up or face down and scan thick mounted originals and single sheets of paper from a single unit.

### ■ World-class colour quality

An advanced tri-linear camera-based image capture unit achieves best-in-class productivity. Outstanding image quality is delivered through the innovative use of bright white LED light sources for illumination and 600 x 600 dpi resolution.



### KIP 2300 features

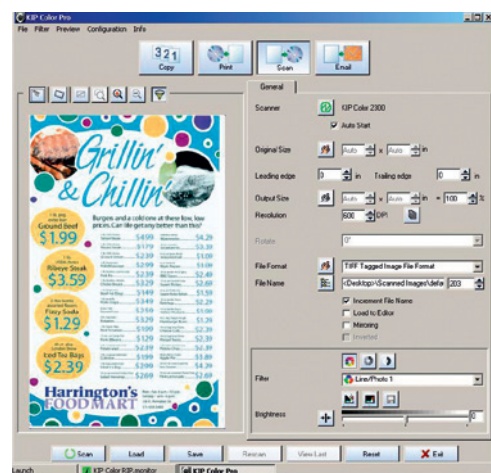
- Ultra-fast imaging with KIP Tru-Speed technology
- Dual-feed flexibility: Face up or Face down scanning
- 24 bit RGB true colour image capture
- Thick and mounted stock support with integrated document support system
- Visual operator feedback system for productive stream-scanning
- Extended optical system warranty

### Mono/colour imaging features

- Monochrome scanning speeds of up to 304 mm per second
- Colour scanning speeds of up to 152 mm per second
- High-resolution, 24 bit colour image quality
- Advanced KIP imaging technologies for superior results
- Copy & print directly to inkjet printers or to create colour digital files
- Easy system calibration process ensures colour copy, print & scan accuracy
- Increased system functionality with optional KIP Color Pro software

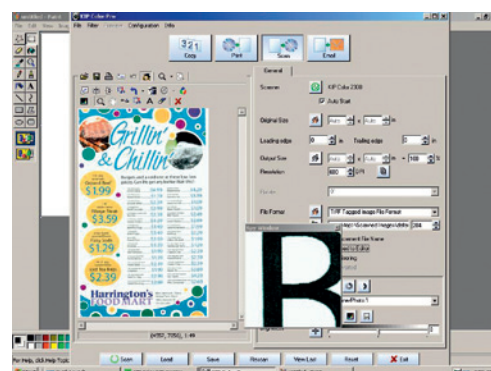


# KIP Color Pro software



Copy, print & scan

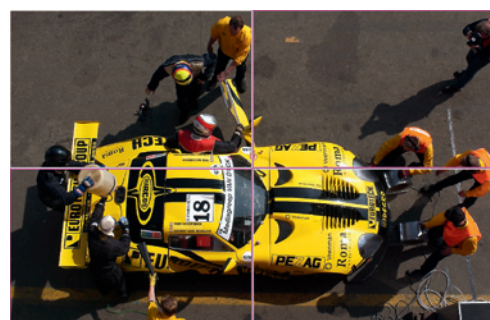
Running from a dedicated PC, this powerful software package upgrades the KIP 2300 production scanner in dual footprint configurations. It delivers advanced copying and scanning features and also includes the ability to RIP files to print. Users may print in monochrome or colour to multiple printers, ensuring speed, flexibility and accurate production of high-quality colour copies.



Professional image editor

## KIP Color Pro imaging features

- Custom quality filters
- Image deskew & despeckle
- Image nesting
- Wipeout / mask
- Colour management
- Printing of collated colour sets
- Image editor
- Image area crop
- Panelling
- Print to Inkjet (RIP)
- Scan-to-email



Copy & print paneling

## Print management applications

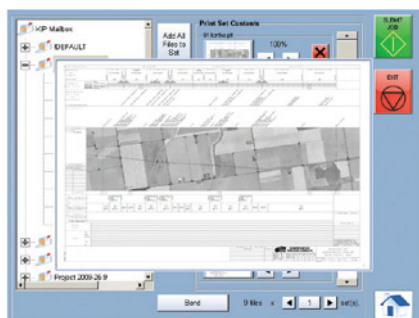


### ■ Touch screen productivity

KIP systems eliminate the need for additional PC hardware by printing documents directly from the touch screen software. Scanned images can be easily recalled and printed from the touch screen mailbox storage system or may be concurrently printed during scan to file operations.

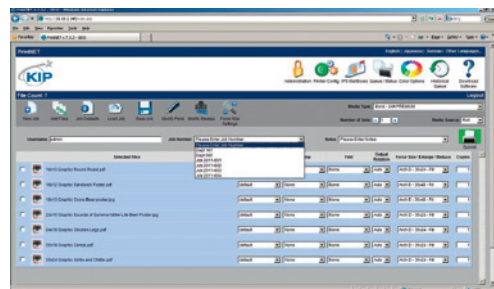
Integrated support for removable media such as standard USB drives provides the ability to print documents from a range of media formats, as well as scan documents directly to them.

- Print directly from removable USB-based media storage drives and system mailboxes
- Concurrent print- and scan-to-file at the touch screen display
- Secure, centralised data storage & access
- Integrated print previews of each file within a complete job set



### ■ KIP PrintNET

KIP PrintNET is a true web-based print production tool that delivers powerful colour file viewing & printing, job queue management and administration features without the need to install any software applications on network computers. Users may select and send single or multiple files to KIP systems, complete with image adjustments such as scaling, stamping and colour management. In addition, KIP PrintNET generates email reports detailing system usage on demand or at designated intervals.



### ■ KIP Cloud printing

KIP Cloud printing delivers the ability to email files to a KIP systems for immediate or future viewing and printing. Simple key words can be used in the email body to specify printing instructions for each job set or file, helping mobile users to stay productive.







### ■ KIP Print

KIP Print network printing software is an easy to use application designed to provide operators with a fast and accurate means of producing high quality print sets from all types of wide format digital files. An intuitive ribbon style interface with an emphasis on job building features column browsing, colour thumbnail previews and total preflight control. Colour and b/w documents are efficiently selected for printing in collated sets with the ability to designate custom output preferences before print submission.

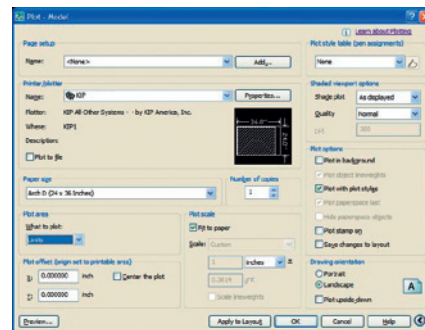
- New graphical user interface
- Convenient automatic installation and setup
- Windows 7 style ribbon bar for easy feature selection
- Thumbnail preview and image size while selecting files
- Graphical choice of predetermined image settings
- Forced scaling to page size and roll width
- Two-up printing for multi-copy nesting
- Output size updates as scaling is adjusted
- WYSIWYP thumbnail image viewer
- Custom job build columns
- Re-order and set individual settings for multi-page files
- Custom fold pattern for each file
- KIP Cost Review application
- KIP track system

### ■ KIP reprocontrol

This versatile remote file submission tool and print list management solution can drive either 1 KIP wide format printer (reprocontrol b/w) or various KIP and non-KIP printers (reprocontrol.net) and installed folders. reprocontrol enhances the KIP functionality with the creation of hotfolders and varied accounting features. Supported file formats are Postscript, PDF, DWF, PLT, PRN, TIFF and JPEG.

### ■ KIP AutoCAD Driver features

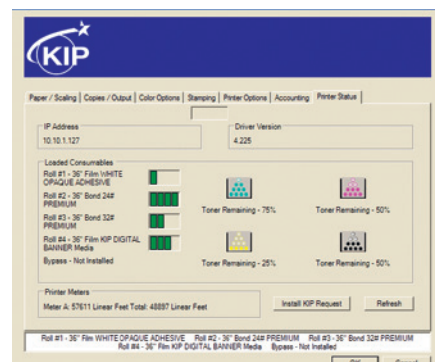
- HDI drivers for AutoCAD
- Displays current media information and real time system status
- Raster image control to adjust gamma and density levels for embedded raster data
- Data tracking for job accounting including user name, job number, and description fields
- User and job number passwords may be required before printing
- Image stamping allows placement of text and/or stored images anywhere on the document



B&W printing options

### ■ Microsoft Certified KIP Windows Driver features

- 2-way communication with KIP 7700/7900
- Displays current media information & real time system status
- Prints in monochrome and greyscale
- Selection of folding parameters
- 64 bit operating system compatibility
- 1 – 999 copies or collated sets
- Labelling of documents with user name, job number and data tracking information
- Job accounting and data tracking, including user name, job number and data tracking information
- Printing from design, project management and mark-up applications



Printer status

## KIP system operations



### ■ KIP Cost Review application

Print costs vary due to toner coverage, media type and system maintenance. These costs are calculated by the KIP Cost Review application and translated into detailed reports to accurately invoice users, departments, projects and clients. All reports generated by the application can be transmitted via email or printed on demand. Standard reports include:

- Printable usage summary
- View toner coverage report
- View media details
- View recent jobs report

### ■ KIP Track system

When activated, the KIP Track system requires operators to enter user name & password information before operating a KIP system. Activity reports can then be generated related to individual users or projects. The KIP Track print controls are integrated with the KIP Cost Review application and included in all KIP print production software applications.

User	JobName	JobID	Date	Time	Pages	Size	Status	Date
SPRINGS	454 001-004	0	0	0	0	0	0	08/11 08:11

JobName	Pages	S.S.	M.S.	C.S.	E.S.	Toner	S	Size	Date	Total
Black CMR Doc Reporting.pdf	20 481	1 985	0 376	4 481	82 774	6 33	80 000	82 380	08/09	80 000
Black CMR Enrollment.pdf	5 718	4 891	7 725	5 481	22 291	6 33	80 000	80 340	08/09	80 000
Black CMR Payment.pdf	1 981	1 981	1 981	1 981	1 714	6 33	80 000	82 380	08/09	80 000
Black CMR Doc Reporting.pdf	20 481	1 985	0 376	4 481	82 774	6 33	80 000	82 380	08/09	80 000
Black CMR Enrollment.pdf	5 718	4 891	7 725	5 481	22 291	6 33	80 000	80 340	08/09	80 000
Black CMR Payment.pdf	1 981	1 981	1 981	1 981	1 714	6 33	80 000	82 380	08/09	80 000

### ■ Touch screen controls

The integrated KIP touch screen operator panel provides the ultimate in copy, scan and print technology right at the user's fingertips. KIP systems eliminate the need for additional PC hardware by printing documents from removable media such as standard USB drives, network drives, & scan mailboxes directly from the touch screen. Operation is facilitated with the following user tools:



### Information centre

The KIP 7700/7900 is configured to display contact information specific to the KIP authorised service provider. This feature is designed to assist operators when requesting consumables, service calls and system upgrades.

### System guides

The KIP 7700/7900 operator panel displays illustrated guides to explain system operations including mono/colour copy- and scan-to-file functions. In addition, step-by-step media and toner replacement procedures are automatically displayed when necessary to provide users with system instructions.

The KIP System Guide is available at the KIP 7700/7900 operator panel and downloadable via KIP PrintNET to assist operators by providing a quick reference resource for all KIP application features.

### System upgrades

Each configuration may be easily upgraded in the field to provide new system features at any time, including mono/colour scan-to-file and copy.



# KIP folding & stacking and configurations

## ■ KIPFold 7700/7900

The KIPFold 7700/7900 system automates document finishing requirements by providing folding, stacking and collation in a compact design. The system intelligently communicates with the KIP 7700/7900 and is fully integrated with all KIP copying and printing applications and drivers to provide seamless workflow integration.

### KIPFold 7700/7900 packet standards

- Metric print sizes: A3–A0
- Folded packet sizes: 210 mm x 297 mm
- Margin: 0–50 mm user selectable
- Packet Orientation: portrait or landscape (arch., eng.) portrait (metric)

### Fold types

The KIPFold 7700/7900 provides the flexibility to fold copies and prints into all architectural, engineering and metric standard packet sizes. Prints are accepted in either landscape or portrait format, allowing for fast and efficient folding operations. In addition, users may specify individual packet orientation – either landscape or portrait.



## ■ KIP stacking solutions

Consistent, accurate and reliable KIP stackers deliver neatly stacked and collated document print sets. From simple print catchers to intelligent online stacking systems, KIP solutions can be easily tailored to suit your exact needs, while maintaining the flexibility to grow as demands increase.



## ■ KIP 7700/7900 system configurations

Function	Network printing systems	Multi-functional systems	Production systems
Mono network printing	•	•	•
Touchscreen user interface	•	•	•
PC-based submission application	•	•	•
Web-based submission	•	•	•
Windows certified drivers	•	•	•
AutoCAD drivers	•	•	•
Unified accounting	•	•	•
DWF printing	•	•	•
DWF multi page scanning	•	•	•
System administration functions	•	•	•
Mono copying	○	•	•
Mono scanning	○	•	•
Colour scan	○	•	•
Colour copy to inkjet	○	○	•
Colour printing to inkjet	○	○	•
PDF sets printing	○	○	○
KIPFold	○	○	○

• standard, ○ optional

## Technical specifications

### Printing technology

#### Technology

LED printer with KIP HDP Plus Technology

#### Resolution

600 x 1,800 dpi

#### Toner efficiency

100%, no waste

#### Exposure

Organic Photoconductor

#### Fusing technology

Oil-free, Heat & Pressure Fusing Unit

#### User interface

Illustrated operator guide displayed in full colour on integrated touch screen interface

### Productivity

#### Printing speed

5 A0/min (7700); 7 A0/min (7900)

#### 1st print out time

21 seconds (7700); 15,5 seconds (7900)

#### Warm up time

< 2 minutes (7700); < 6 minutes (7900)

### Media

#### Media source

4 rolls and 1 bypass

#### Media type

Bond, vellum, translucent bond, film, fluorescent bond

#### Media width

Min. 297 mm – Max. 914 mm

#### Printing length

Max. 6 m (unlimited optional)

### Environmental data

#### Dimensions (W x D x H mm)

1,385 x 820 x 1,590 (with user interface)

#### Weight

370 kg (7700); 386 kg (7900)

#### Power supply

220-240V, 50/60Hz, 13A (7700); 15A (7900)

#### Power consumption (average)

2,0 kWh (7700); 2,5 kWh (7900)

#### Safety approvals

TUV GS, CE, (C)UL, FCC, CCC

### KIP IPS 7.4 Software Suite

Platform Microsoft Windows® XP Embedded

#### Configurations:

- Network print system: network printer + printer via USB key
- Multifunctional system with integrated KIP 600A or KIP 2300 scanner
- Dual footprint production system with KIP 2300 mobile scan station

### Scan software options for multifunctional system configuration (with KIP 600A, 2300 scanner):

- Colour scanning via KIP Color Advanced Scan (standard in single footprint multifunctional systems)
- Colour copy via KIP Color Advanced Copy
- Colour print via KIP Color Advanced Print

### Scan software options for production system configuration (with standalone KIP 2300 scanner):

- Advanced colour scan & copy features, RIP files to print via KIP Color Pro

### File formats

HPGL, HPGL/2, HP-RTL, TIFF, CALS type 1, EDMICS (C4), DWF, CalComp 906/907/951, Adobe® PostScript®/PDF (optional with KIP submission tools and in standard with reprocontrol)

### Security

Administrator selectable security levels

### Interface

Ethernet 10/100/1000 Base T

### Network protocols

TCP/IP, NetBEUI(smb)  
Other protocols supported through external print server

### Drivers

#### KIP application drivers

Windows 2003, 2008, XP, Vista and Windows 7 (32 and 64-bit versions). Microsoft WHQL certified

#### KIP HDI Driver

AutoCAD up to 2012

### Submission utilities

#### KIP Print

PC-based submission utility

#### KIP PrintNET

Web browser-based submission utility

#### reprocontrol b/w

Enhanced RIP and submission software to drive 1 KIP printer and folder, incl. PDF/PS printing option

#### reprocontrol.net

Enhanced RIP and submission software to drive various KIP printer & non-KIP printers and folders, incl. PDF/PS printing option; enhanced functionality with creation of hotfolders, accounting features; supported file formats: Postscript, PDF, DWF, PLT, PRN, TIFF and JPEG.

### Scanning solutions (optional):

#### KIP 600A SCANNER

#### Scanning method

Contact Image Sensor (CIS)

#### Light source

LED (R/G/B)

#### Original feeding

Face up

#### Scan width

Min. 279 mm; Max. 914 mm

### Scan length

Min. 210 mm; Max. 6,000 mm

### Optical resolution

600 dpi

### Digital resolution

200/300/400/600 dpi

### Original thickness

Min. 0.05 mm; Max. 1.60 mm

### Scanning speed

60 mm per second

### Software

KIP Color Advanced Scan (standard in 7700/7900 MFP configuration)

### KIP 2300 scanner:

#### Type

Desktop colour scanner KIP 2300 integrated in single and dual footprint configurations

#### Scanning method

CCD

#### Light source

LED

#### Document feeding

Face up, face down

#### Optical resolution

600 dpi

#### Digital resolution

100 – 2,400 dpi

#### Scan width

Max. 914 mm

#### Original width

Max. 1,066 mm

#### Maximum original thickness

16 mm face down scanning only

#### Data capturing

24bit RGB

8bit / 4bit Gray

1bit monochrome

#### Speed

2.5 A0/minute – colour (600 dpi); 6.4 A0/minute – monochrome (600 dpi)

#### Interface

USB 2.0 High-speed Image Link (PCI-Express x1)

#### Software:

KIP Color Advanced Scan (standard in 7700/7900 MFP configuration)

KIP Color Pro (standard in KIP 2300 - mobile reprosta-

tion\* configuration)

#### Dimensions (W x D x H mm)

1,366 x 480 x 310

#### Weight

70 kg

#### Power

100–240V AC

### Stacking solutions:

#### High capacity print tray

Rear-stacking option for 100 prints

#### Weight

17 kg

#### Dimensions (W x D x H mm)

890 x 1,200 x 820

### K-1200 Auto Stacker Horizontal:

Auto stacking system to hold up to 1,000 prints/copies

#### Weight

80 kg

#### Dimensions (W x D x H mm)

1,040 x 860 x 740–860

#### Electrical (Dedicated)

120V, 5 A

#### Print Tray

Adjustable to fit print size

### Folding solutions:

KIPFold – Optional online folder for KIP 7700 /7900

#### Type

Dedicated online folder with flat stacking capability

#### Folding speed

Maximum print production speed

#### Maximum print width

914 mm

#### Fold selections

Fan, packet, book, staple and mailer

#### Folding styles

DIN, Reverse DIN, AFNOR

#### Maximum fanfold length

6 m standard, unlimited optional

#### Maximum crossfold length

2,5 m

#### Metric fold packet sizes

Cross fold: 200 mm to 310 mm

Fan fold: 180 mm to 300 mm

#### Stack capacity

150 A0

#### Dimensions (W x D x H mm)

1,778 x 991 x 1,245

#### Weight

295 kg

\* Complete solution with scanner, stand, PC, touch screen, KIP Color PRO software



- Energy Star
- ROHS compliant
- ISO 14001 standard
- Ozone filters
- 100% toner efficiency, no waste
- Organic, recyclable photoreceptors



KONICA MINOLTA

Konica Minolta  
Business Solutions Europe GmbH  
Europaallee 17  
30855 Langenhagen • Germany  
Tel.: +49 (0) 511 74 04-0  
Fax: +49 (0) 511 74 10 50  
www.konicaminolta.eu